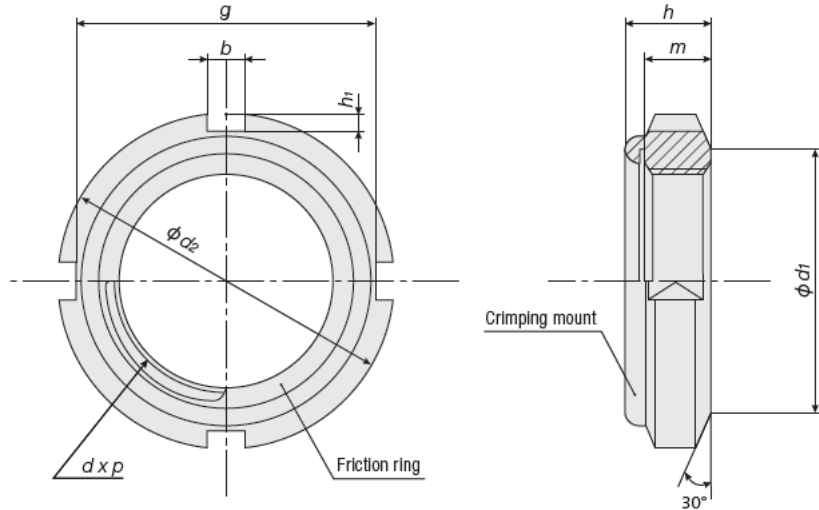


FINE U-NUT Dimension Table



Material (standard items)

Nut body ... S45C-H
 SS400
 SUS304
 Friction ring SUS301

Thread accuracy: ISO6H Unit: mm

Part No.			Designation of Thread d×p	φ d ₁	φ d ₂	h	m	b	h ₁	g	Maximum face runout (maximum)	Thread accuracy length ℓmin	Unit Weight (g)
SC Series (Material S45C-H)	SS Series (Material SS400)	SUS Series (Material SUS304)											
—	FUNM8SS	—	M8×0.75	12.0	16	5.3	4.3	3	1.5	13.0	0.05	5.8	4.1
FUN00SC	FUN00SS	FUN00SUS	M10×0.75	13.5	18	5.2 ±0.3	4	3	1.8	14.4		5.5	4.5
FUN01SC	FUN01SS	FUN01SUS	M12×1	17	22	5.4	4	3	1.8	18.4		6	8
FUN02SC	FUN02SS	FUN02SUS	M15×1	21	25	6.5	5	4	1.8	21.4		7	12
FUN03SC	FUN03SS	FUN03SUS	M17×1	24	28	6.4 ±0.5	5	4	1.9	24.2		7	13
FUN04SC	FUN04SS	FUN04SUS	M20×1	26	32	7.7	6	4	1.8	28.4		8	23
FUN05SC	FUN05SS	FUN05SUS	M25×1.5	32	38	9.1	7	5	2.0	34		10	36
FUN06SC	FUN06SS	FUN06SUS	M30×1.5	38	45	9.1 ±0.8	7	5	2.0	41		10	45
FUN07SC	FUN07SS	FUN07SUS	M35×1.5	44	52	10.2	8	5	2.0	48		11	70
FUN08SC	FUN08SS	FUN08SUS	M40×1.5	50	58	11.2 ±1.0	9	6	2.5	53		12	95
FUN09SC	FUN09SS	FUN09SUS	M45×1.5	56	65	12.5	10	6	2.5	60		13	130
FUN10SC	FUN10SS	FUN10SUS	M50×1.5	61	70	13.5	11	6	2.5	65		14	160
FUN11SC	FUN11SS	FUN11SUS	M55×2	67	75	13.5 ±1.5	11	7	3.0	69		15	185
FUN12SC	FUN12SS	FUN12SUS	M60×2	73	80	13.5	11	7	3.0	74		15	190
FUN13SC	FUN13SS	FUN13SUS	M65×2	79	85	15.0	12	7	3.0	79	16	235	
FUN14SC	FUN14SS	FUN14SUS	M70×2	85	92	15.0 ±0.5	12	8	3.5	85	16	265	
FUN15SC	FUN15SS	FUN15SUS	M75×2	90	98	15.8	13	8	3.5	91	17	320	
FUN16SC	FUN16SS	FUN16SUS	M80×2	95	105	18.6	15	8	3.5	98	19	430	
FUN17SC	FUN17SS	FUN17SUS	M85×2	102	110	19.2 ±1.5	16	8	3.5	103	20	495	
FUN18SC	FUN18SS	FUN18SUS	M90×2	108	120	20.3	16	10	4	112	20	630	
FUN19SC	FUN19SS	FUN19SUS	M95×2	113	125	21.3	17	10	4	117	21	725	
FUN20SC	FUN20SS	FUN20SUS	M100×2	120	130	22.3 ±2.0	18	10	4	122	22	770	
FUN21SC	—	—	M105×2	126	140	22.3	18	12	5	130	22	904	
FUN22SC	—	—	M110×2	133	145	23.3	19	12	5	135	23	954	
FUN23SC	—	—	M115×2	137	150	23.3 ±0.3	19	12	5	140	23	1030	
FUN24SC	—	—	M120×2	138	155	24.3	20	12	5	145	24	1080	
FUN25SC	—	—	M125×2	148	160	25.4	21	12	5	150	25	1170	
FUN26SC	—	—	M130×2	149	165	25.4 ±2.0	21	12	5	155	25	1250	
FUN27SC	—	—	M135×2	160	175	26.6	22	14	6	163	26	1586	
FUN28SC	—	—	M140×2	160	180	26.6	22	14	6	168	26	1748	
FUN29SC	—	—	M145×2	171	190	28.6	24	14	6	178	28	2000	
FUN30SC	—	—	M150×2	171	195	28.3	24	14	6	183	28	2050	

* Specify Part No. when placing an order. * Consult us if left handed, special shape or surface treatment is needed. * Materials include equivalent of each materials. * Dimension may change for improvement. * ℓmin = m + 2.0P